

SPECIFICATIONS

Mechanical

Mating Force: 3.50Kg (7.71Lb) max.
Unmating Force: 1.00Kg (2.20Lb) min.
Durability: 1500 Cycles

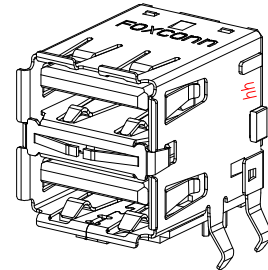
Electrical

Current Rating: 1.5A
Contact Resistance: 30mΩ max.
Dielectric Withstanding Voltage: 500V AC/1min min.
Insulation Resistance: 1000MΩ min.

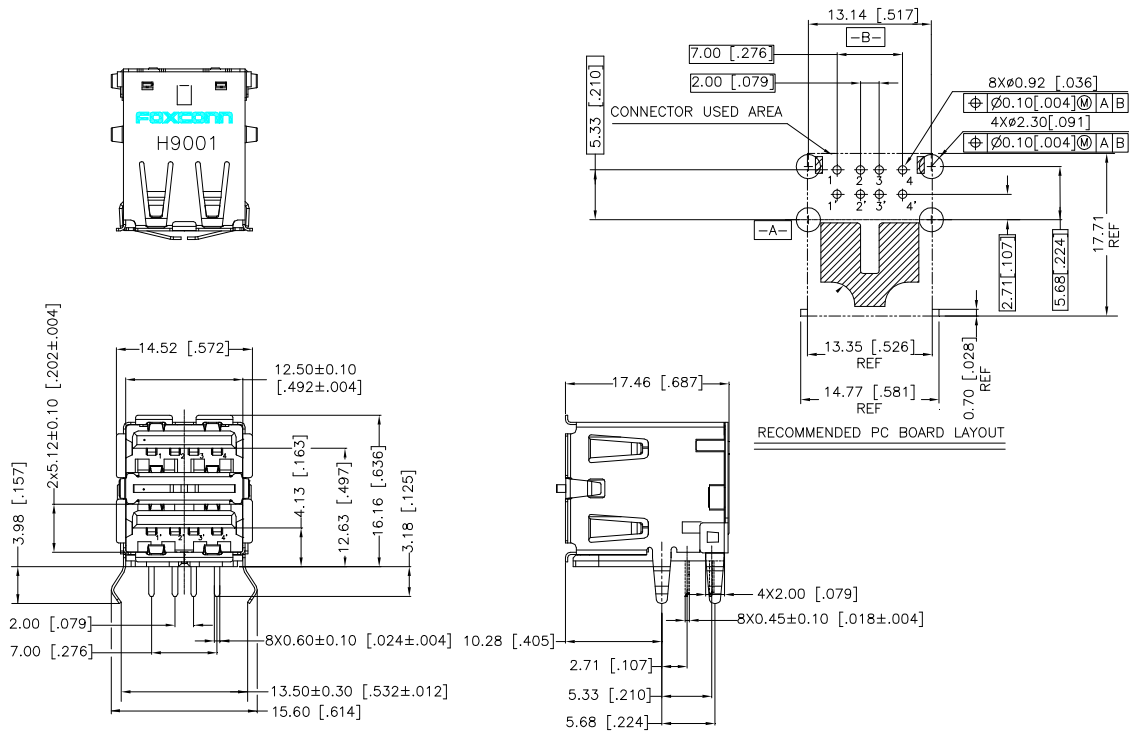
Physical

Housing: Thermoplastic, UL 94V-0 rated
Contact: Copper alloy
Shell: Stainless steel
Plating: See "ORDERING INFORMATION"
Operating Temperature: -55°C to +85°C

UB Series
Right Angle, T/H
8 Pos.



DRAWING



ORDERING INFORMATION

